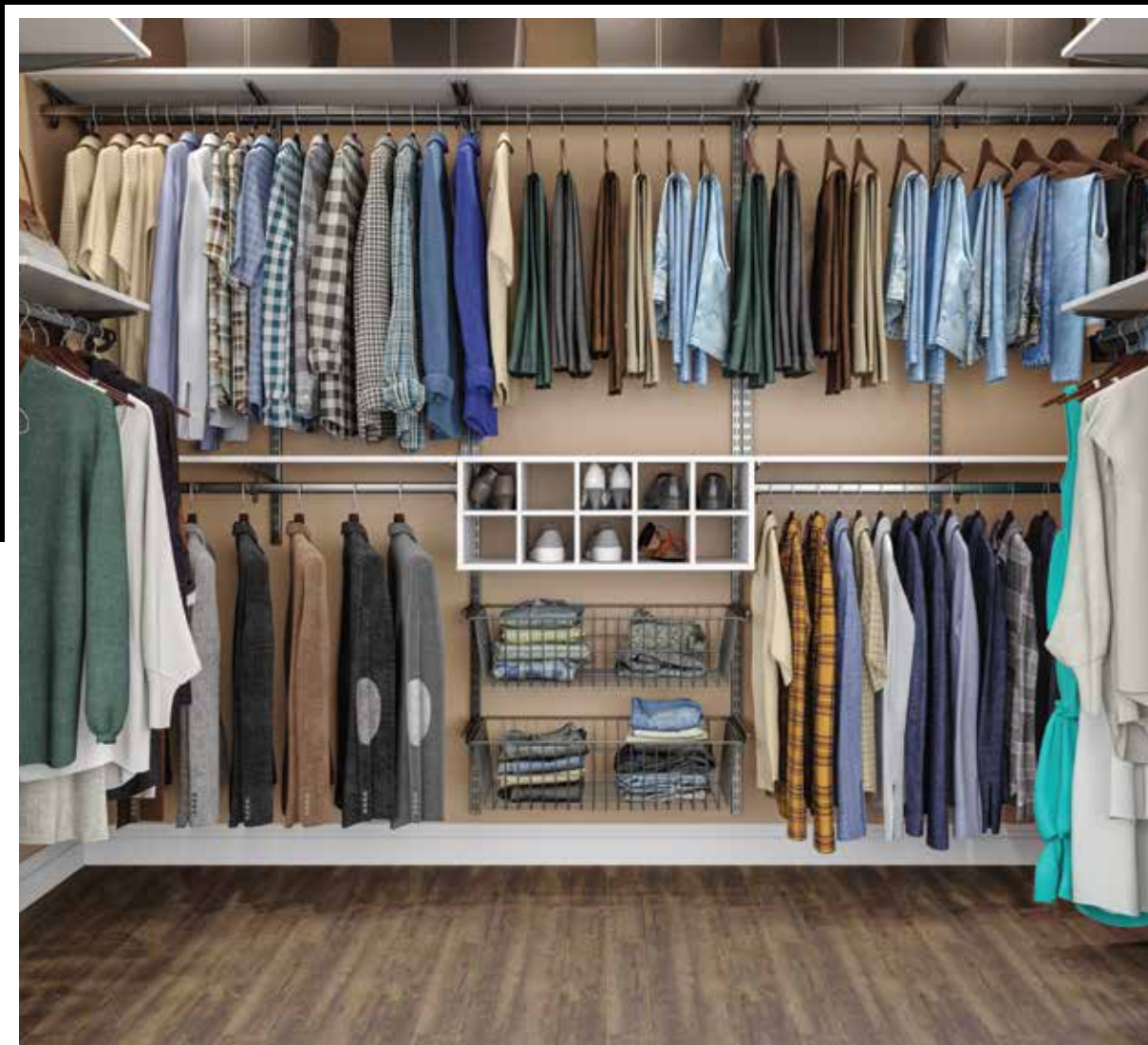


**SIMPLE
BEAUTIFUL
AFFORDABLE**

WEB
www.woodtrac.com

PHONE
1 (855) 854-7465

EMAIL
woodtrac@sauder.com



WOODTRAC
closets by sauder



SpaceTrac
STANDARDS & BRACKETS SYSTEM

STANDARDS & BRACKETS

ORGANIZATION MADE EASY

The *SpaceTrac* system works by utilizing metal standards (attached vertically to a wall-mounted hang track). Brackets are then placed in the standards to extend horizontally and support shelves. It's affordable, flexible, and easy to install. Use it for **walk-ins, reach-ins, pantries, linen closets, laundry, and more.**

UNBEATABLE QUALITY

WoodTrac combines its heritage of innovation with the strength of its state-of-the-art manufacturing operation in Archbold, Ohio. The *SpaceTrac* system is made to last – with sturdy wood or wire shelving. Strong and durable, the wall-mount hardware includes tracks, standards, and brackets.

ADJUSTABLE STORAGE

The *SpaceTrac* system offers personalized configuration and shelf adjustability. So it's easy to rearrange as needs change. Keep it simple or add wood drawers and cabinets for a high-end look.

MADE FOR EVERYONE

The *SpaceTrac* system works for **single-family** homeowners who are building or upgrading their current closets. Or design affordable, beautiful, easy-to-install closets for **multi-family** buildings.

Multi-family executives estimated a 526% return on investment from installing closet organization systems in their properties.

2015 WOODTRAC SURVEY



SpaceTrac

PRODUCT FEATURES

The *SpaceTrac* system includes wall-mount standards and brackets, plus several shelf, drawer, and cabinet options. All parts attach to vertical standards, creating design flexibility and adjustability. The modern look and easy installation make it an attractive closet system for any space. Combined, these features create everything custom storage should be – **functional, beautiful, and affordable.**



Soft-close drawers



Wood or wire adjustable shelves



Stylish finishes all at the same cost



5/8" thick shelving for durability and value



Solid hanging rods & tiltable shoe shelves



Fast, easy installation with vertical standards



SHELF OPTIONS



PRE-FINISHED WOOD

Made with high definition micropapers, these shelves are environment-friendly and durable. Choose from 3 finishes – **white, espresso, and salt oak.**

MULTIPLE SIZES

- 12" or 14.5" deep
- 24", 30", 36", 48", 60", 72", or 96" width

CABINETS & DRAWERS

Hung directly on standards, cabinets and drawers add a high-end look and additional functionality to the SpaceTrac system.



VENTILATED WIRE

For an economical option, use ventilated wire shelving with the *SpaceTrac* system. WoodTrac's wire shelving (*WireTrac*) is made with epoxy coated steel.



ABOUT WOODTRAC

WoodTrac is a division of Sauder Woodworking Co. – a privately held, third-generation, family run business in Archbold, Ohio. Established in 1934, Sauder Woodworking Co. is North America's leading producer of ready-to-assemble (RTA) furniture and one of the top five residential furniture manufacturers in the United States.

So when you choose WoodTrac closet systems, you get a quality, American-made product that is backed by Sauder's outstanding customer service. We're here to help you design, personalize, and organize your spaces.

DESIGN YOUR CLOSETS

Use the online WoodTrac closet designer:
www.woodtrac.com

CONTACT US

For design services and assistance,
email us at woodtrac@sauder.com,
or call us at **1 (855) 854-7465**.

