

WoodTrac Closet Catalog on 20-20 Design



For all questions about designing a closet please contact us at woodtrac@sauder.com

For more info on individual cabinets or items, design inspiration, install tips, etc. visit www.woodtrac.com.

Design tips

WoodTrac closets are a cabinet based system with 18", 24" and 30" wide cabinets (interior dimensions). Drag and drop cabinets into your Room Layouts to get started.

Generally at least 50% of storage in a closet should be hanging space. For an average homeowner we suggest 60% double hang, 10% single hang and then split the rest on shelving and/or drawer storage.

Clients with many dresses or who hang pants full length may need more single hang space versus a typical homeowner who needs 12-24" of Single Long Hang space.

Shelf cabinets with their tiltable and adjustable shelves are ideal for shoe storage or flat storage of items like sweaters.

Double Hang cabinets are the easiest installation and best looking option for hanging space.

Door/Drawer cabinets offer some shelf storage and some drawer storage for storage of loose items like socks, and undergarments. 24" and 30" Door/Drawer Cabinets also have upper doors to hide items and add a high end look.

Add more drawers for clients who don't have drawer storage (chests, dressers) in their bedroom.

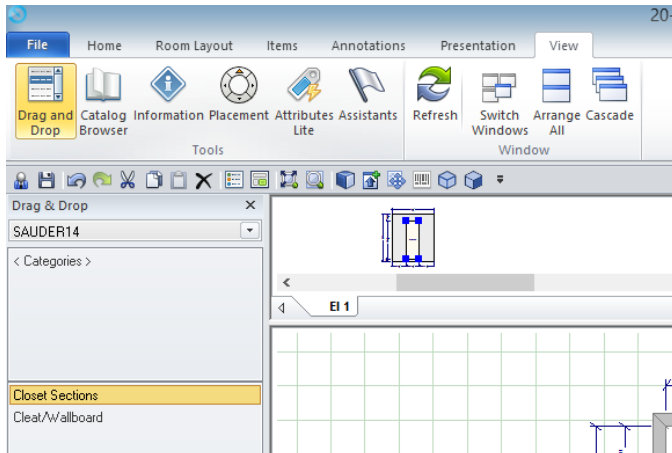
Add a pack of extra shelves to a Shelf Cabinet for clients with large shoe collections.

To deal with corners run cabinets on one wall into the corner or run a shelf and rod into the corner. Then on the perpendicular wall start the next cabinet or hanging space 24" from the wall corner.

Accessorize with Rev-a-shelf wire baskets, valet rods, hampers, etc. Use code 1sauder50 to get 50% off all items on www.rev-a-shelf.com.

Using the SAUDER14: WoodTrac Closets by Sauder Catalog

Load the catalog. Click View->Drag and Drop->Sauder Woodworking Company -> SAUDER14



Closet Sections- contains Double Hang Cabinets, Shelf Cabinets, Doors/Drawers Cabinets, Single Hang Shelf and Rod, Reach in Closet Kit and Uprights.

- **Double Hang Cabinet-** Double hang cabinet with solid back. Extra shelves and Drawers can be added if client wants drawers or shelves on bottom and hanging on top.
- **Shelf Cabinets-** Cabinet with 6 adjustable shelves one fixed middle shelf. Shelves can be tilted. Extra shelves or drawers can be added.
- **Doors/Drawers Cabinet-** 18" comes with 1 small drawer 2 tall. 24" and 30" have drawers and glass doors. Extra drawers or shelves can be added.
- **Single Hang Shelf and Rod-** create custom sized hanging space up to 47.25" wide. More details below. Use two to create custom sized double hang space. Use optional wallboard to finish drywall under shelf/rod.
- **Reach in Closet Kit-** Economical solution to reach in closets up to 96" wide. Contains cleats, shelves, rods and an upright to create double hang on one side and single on another split by an upright. More details below.
- **Upright-** use on walls with Single Hang Shelf and Rod to create built in look. Also can be used to end a run of Single Hang Shelf and Rod mid wall.

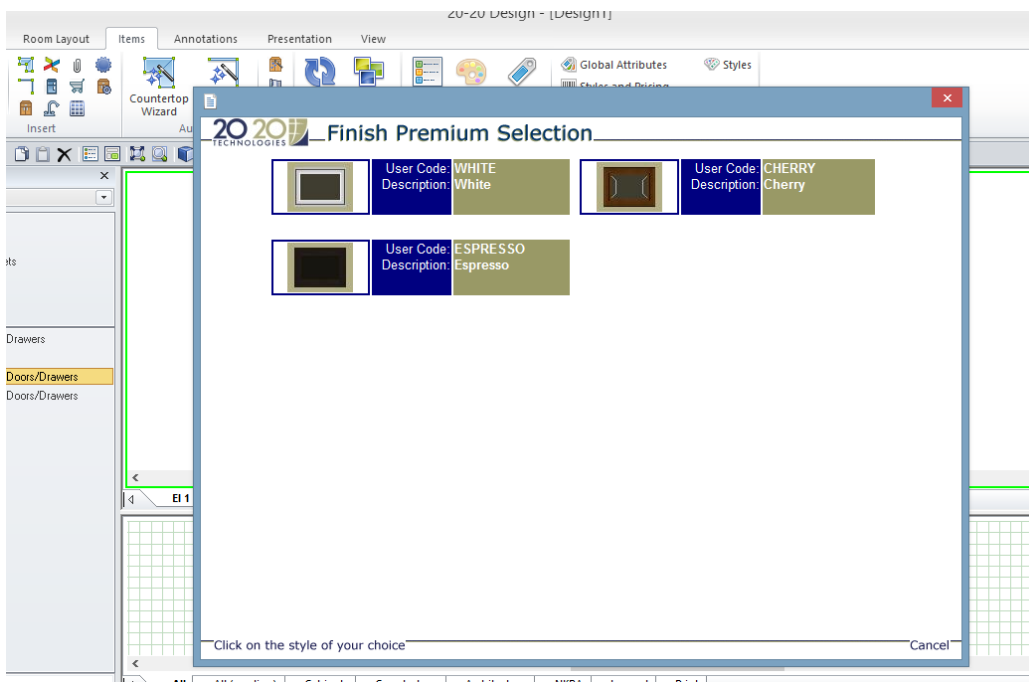
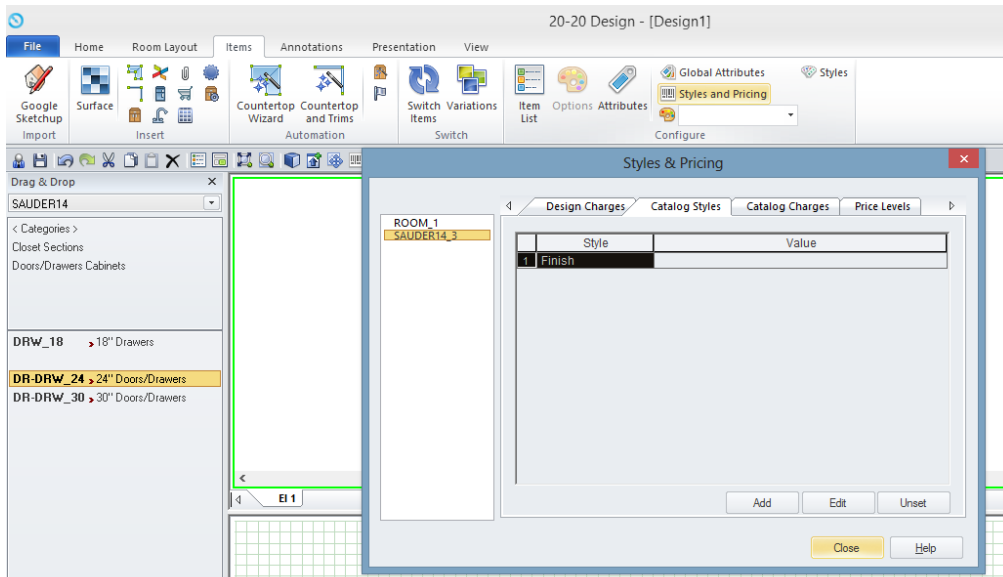
Cleats/Wallboard must be added to the manually to Item List. All designs/installs require Cleats.

- **Wall Cleats-** must be added to every design. Runs behind cabinets and under shelves. See instructions below to calculate amount of wall cleat needed.
- **Wallboard-** optional to use under Single Hang Shelf and Rod or anywhere else drywall is exposed. Sold in 4'x4' pieces, 2 to a pack.

Selecting a Finish

Click on “Styles and Pricing”. Go to “Catalog Styles” and double click the desired finish. WoodTrac closets come in White, Cherry or Espresso with fixed drawer styles by finish.

To change a finish go back to “Catalog Styles” and “Unset” the existing finish then click “Add” and repeat the Selecting a finish first Step.



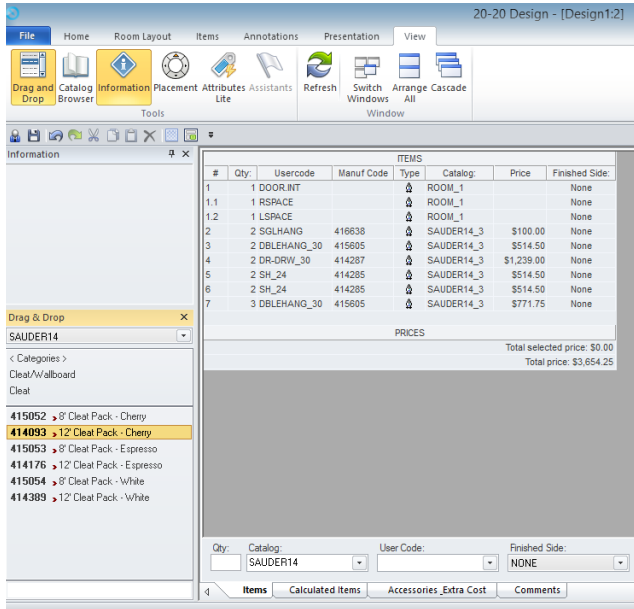
Wall Cleats

All designs must use Wall Cleat to secure units to the wall. To calculate wall cleat:

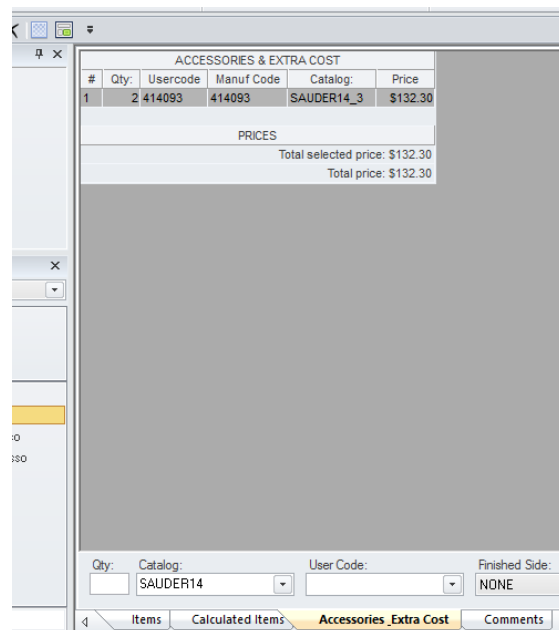
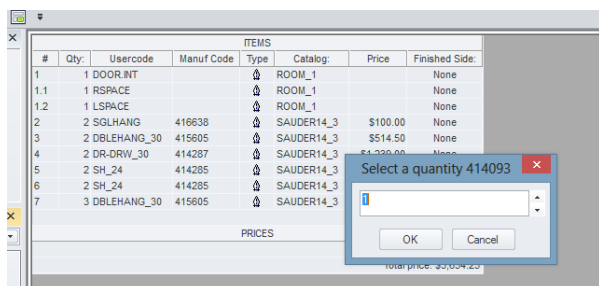
Add exterior width of cabinets (31.5" W, 25.5" W, 19.5"W) and width of cut to size hanging space, which is your Single Hang Rod and Shelf. Wall cleats are 143" or 96" per cleat and 2 to a box. Account for scrap.

Note: These do not need to be added to the rendering. All units and Shelf & Rods have them automatically rendered in.

IMPORTANT: To add these to your quote go to "List View" and drag the Cleat over and drop onto the "Items" page. You must do this step.

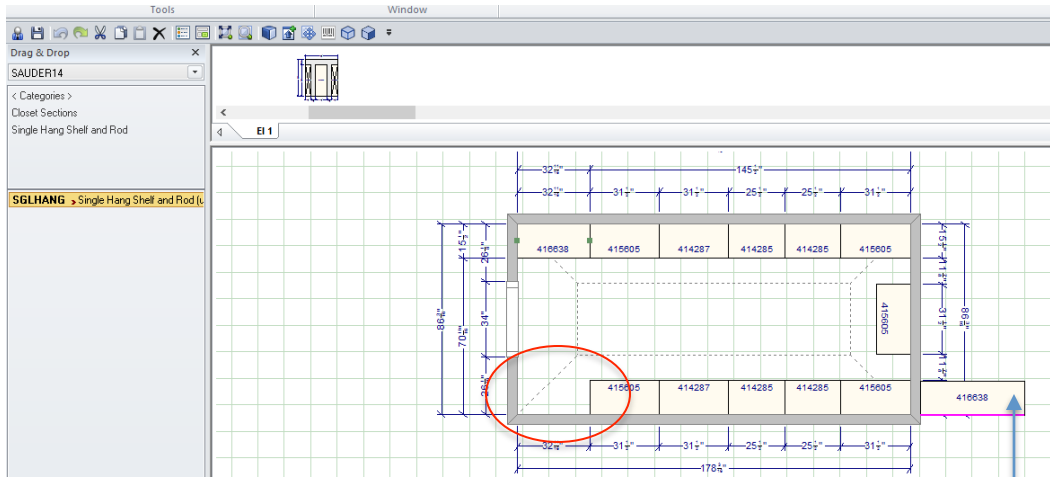


Enter your desired quantity and the Wall Cleat quantities will now show up in the "Accessories_Extra Cost" tab in "Show Item List" view.



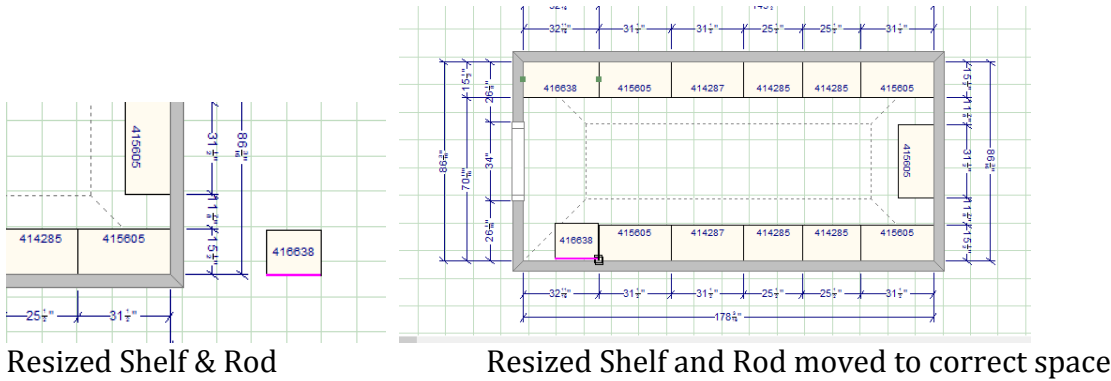
Custom sized Hanging Space- Single Hang and Rod

To create custom sized hanging space between cabinets or between a cabinet and a wall use a "Single Hang Shelf and Rod" found in the catalog category "Closet Sections"



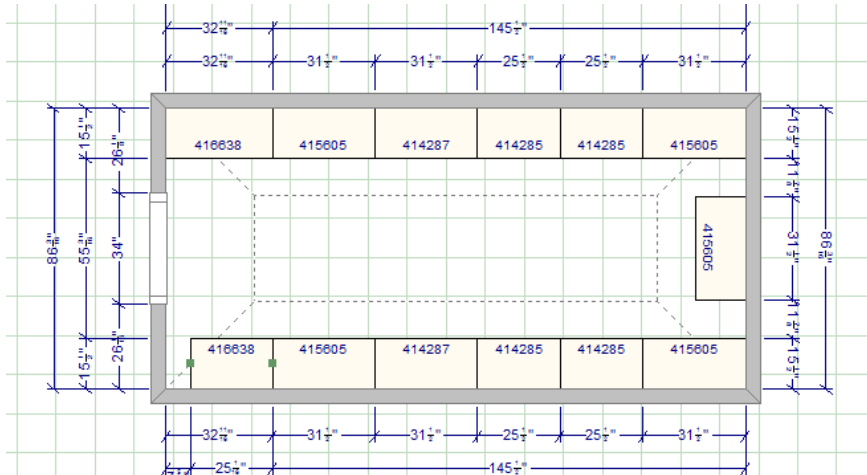
Click **Closet Sections->Single Hang Shelf and Rod** then drag and drop into the space (circled in red) and resize to fit the space.

If the space is less than 48" the Shelf/Rod shape will appear on the right or left side of the wall. Resize it and then move it to the correct space. Then resize it again to fit the correct space.



Resized Shelf & Rod

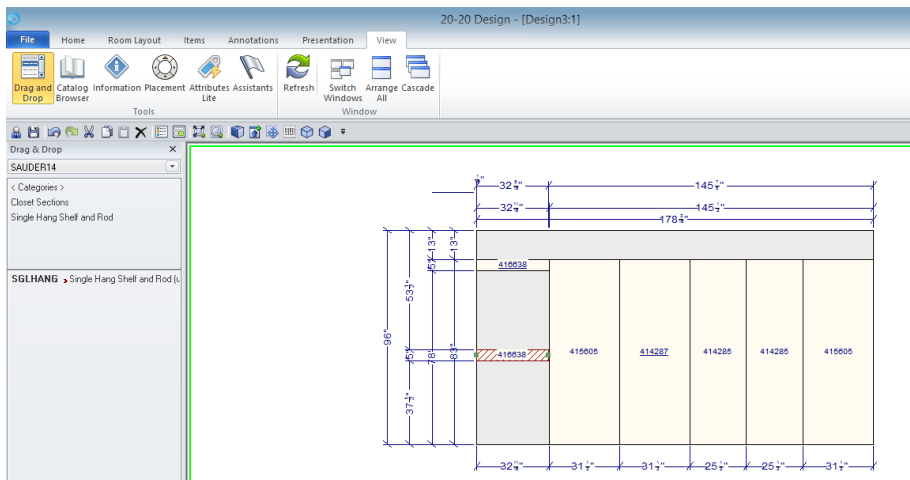
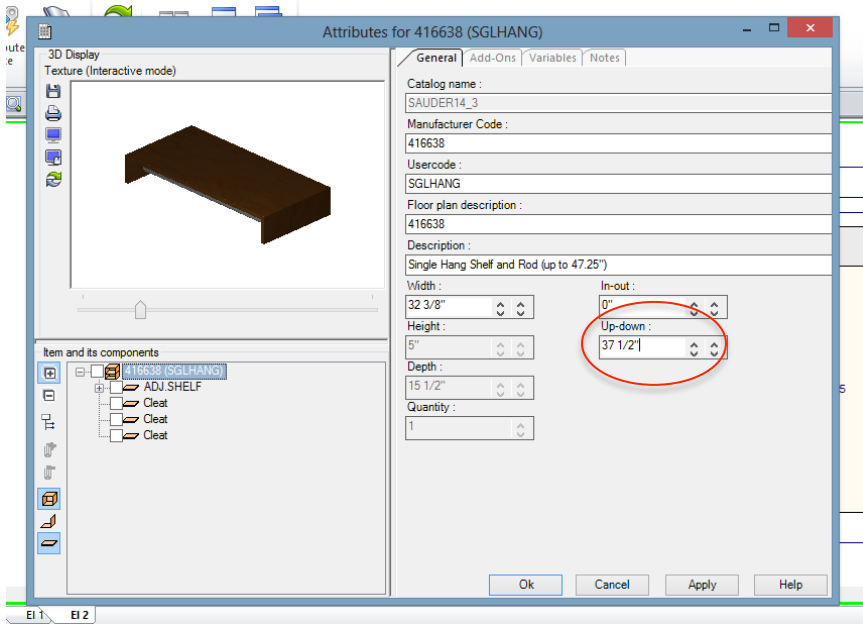
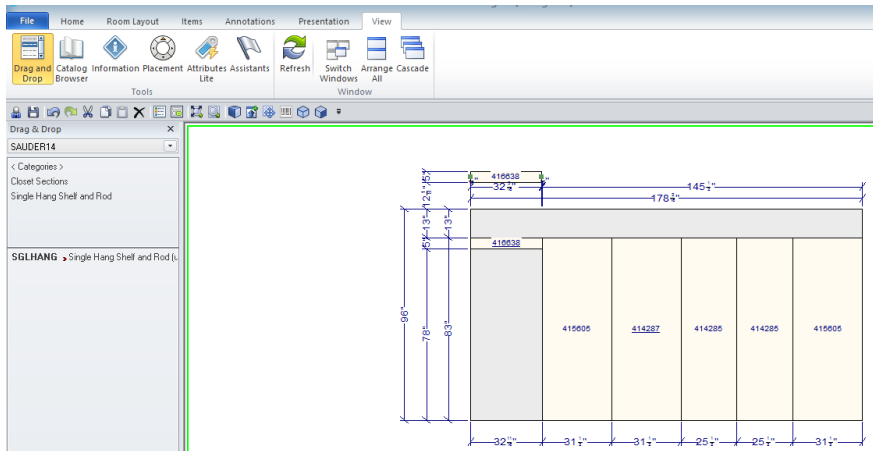
Resized Shelf and Rod moved to correct space



Resize Shelf and Rod to fit blank correct space

Custom sized Hanging Space- Double Hang and Rod

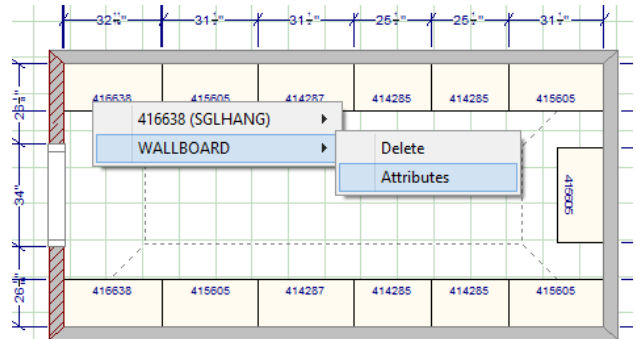
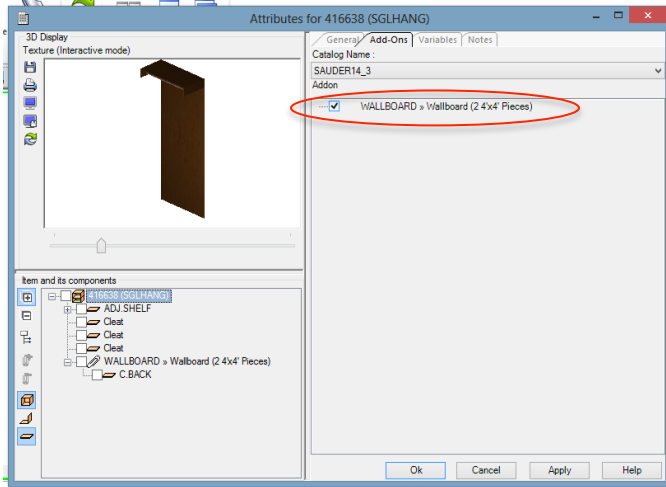
Follow steps for Single Hang space, then go to Elevation View and drag and drop another Shelf/Rod. Then click on the new Shelf/Rod got to **Attributes-> General** and change "Up-down:" to 37.5"



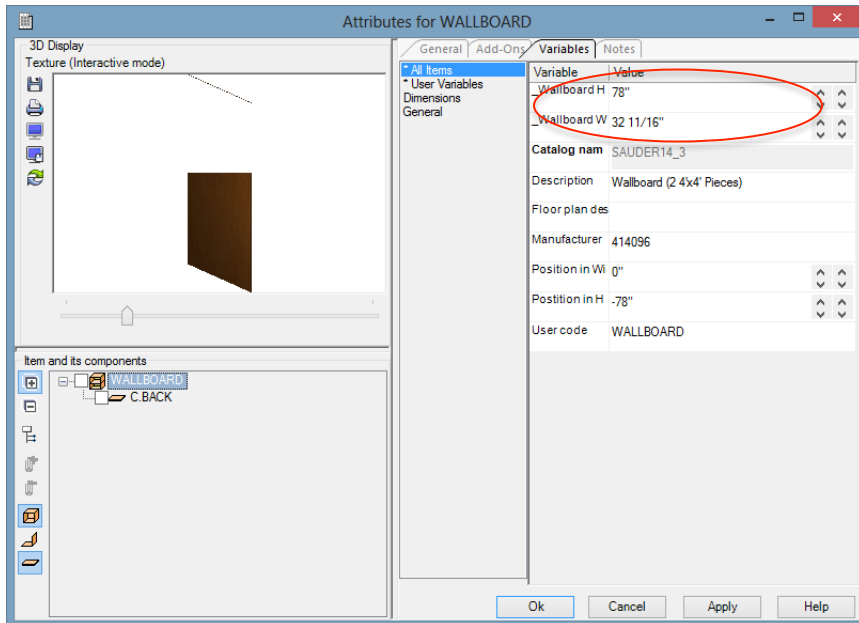
Wallboard

Wallboard, which is used to finish drywall behind hanging space, is the same materials as the cabinet backs, and must be added manually to the “Item List”. It comes packed in 2 4'x4' sheets. Even though you can render it you must still add it to the “Item List” manually.

To render Wall Board under a Shelf and Rod, Right click the “Single Hang Shelf and Rod” shape then going to **Attributes-> Add-Ons** tab and check the **WALLBOARD** box.



To resize Wallboard, Right click the Single Hang Shelf and Rod then going to Wallboard-> Attributes-> Variables tab and changing the _WallboardH or _WallboardW.

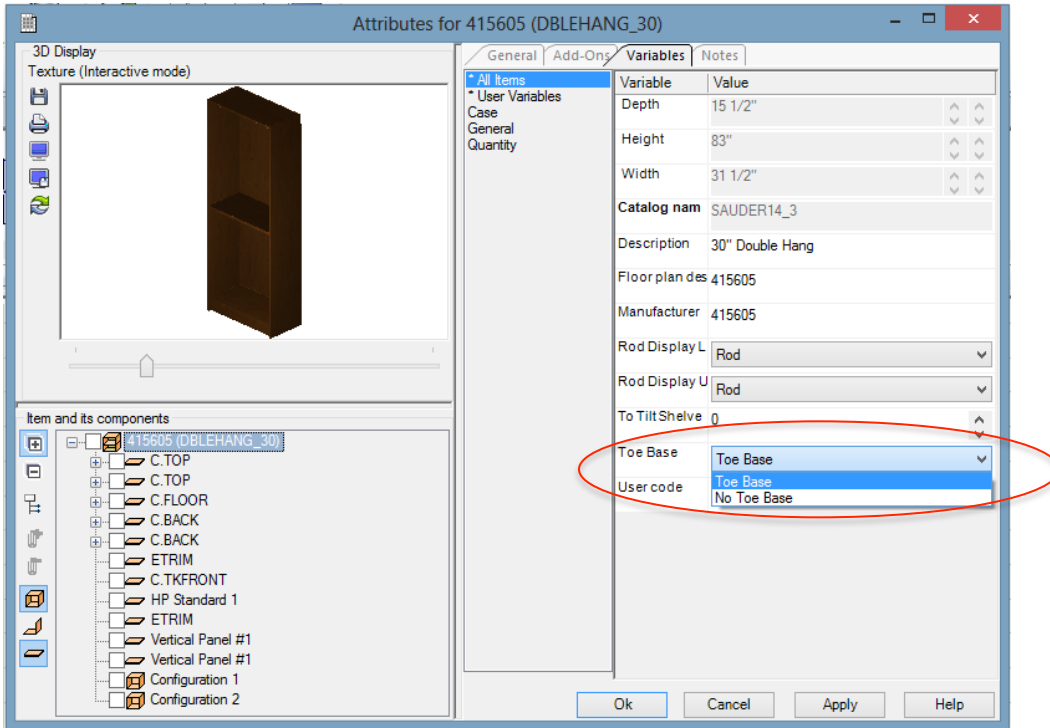


Even though they render you must add them to the “Item List”.

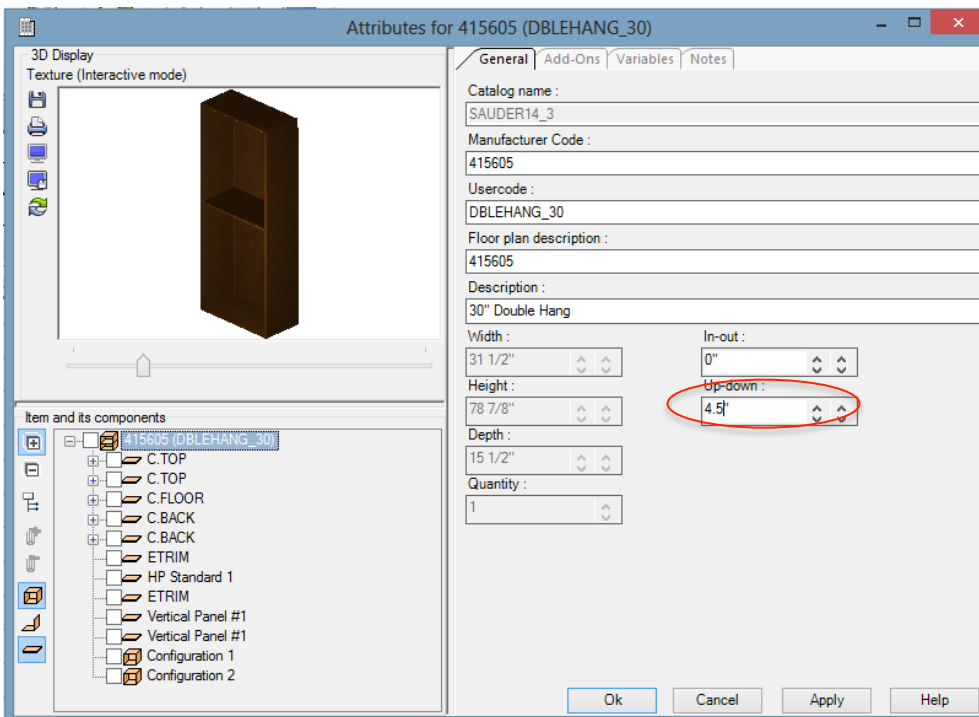
To add these to your quote go to “List View” then drag the “Wallboard” over and drop onto the “Items” page. Enter your desired quantity and the Wallboard quantities will now show up in the “Accessories Extra Cost” tab. See instructions above on Wall Cleats for more details on manually adding items to “Item List.”

Hanging cabinets vs Floor Mounted

Cabinets default as floor mount. To change them to wall mounted go to **Attributes->Variables** tab click on Drop down menu next to **_Toe Base** to change to **No Toe Base**.



Next also in **Attributes-> General** tab change **Up-down:** to how many inches off the floor you would like the cabinet to be. Suggested height is 4.5" but depending on baseboards, ceiling height, etc. you can go higher or lower.

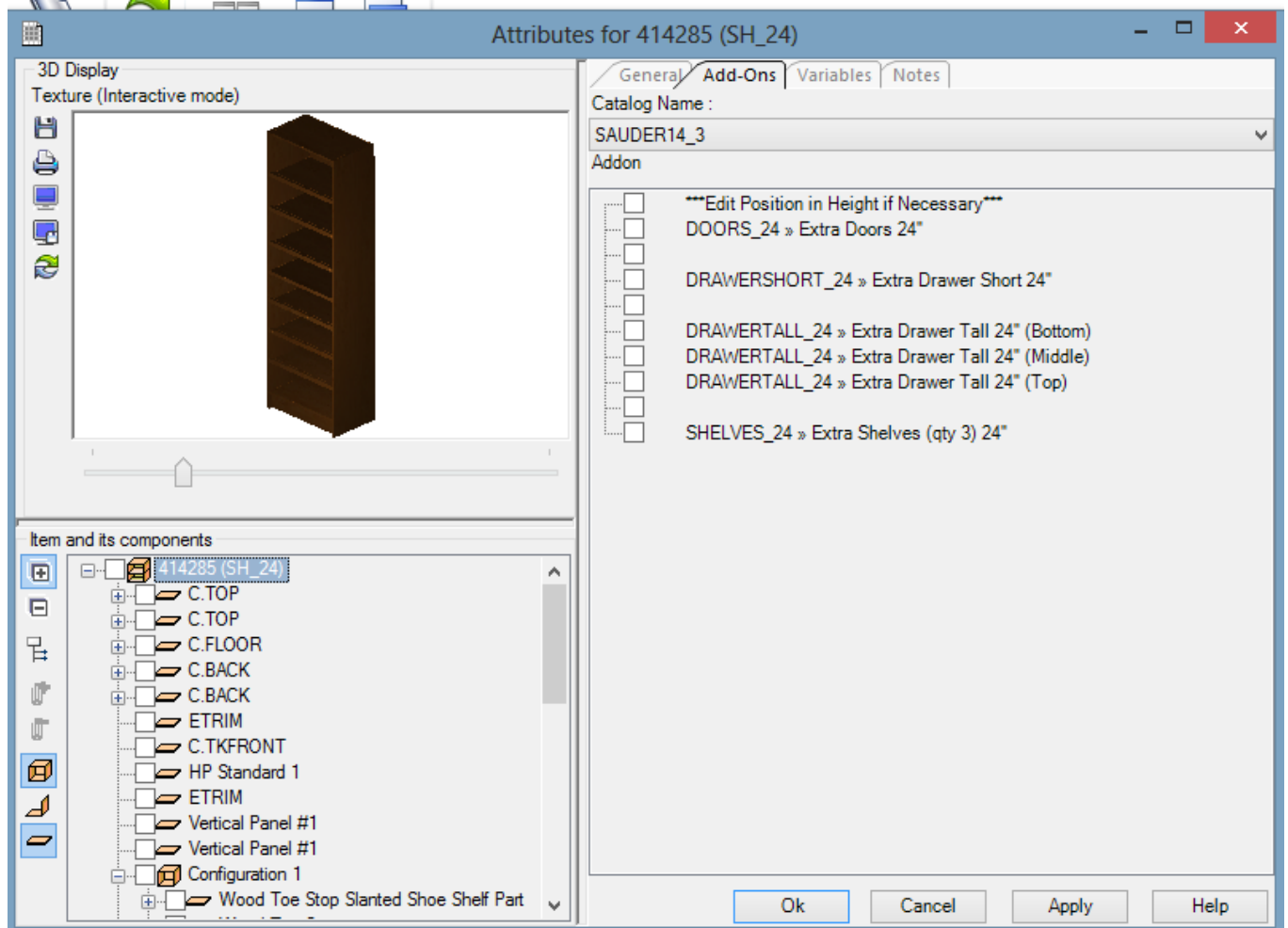


Customizing cabinets

To add extra Drawers, Shelves, or Doors to a cabinet click on **Attributes-> Add-Ons** tab and click in the check box of the desired extra.

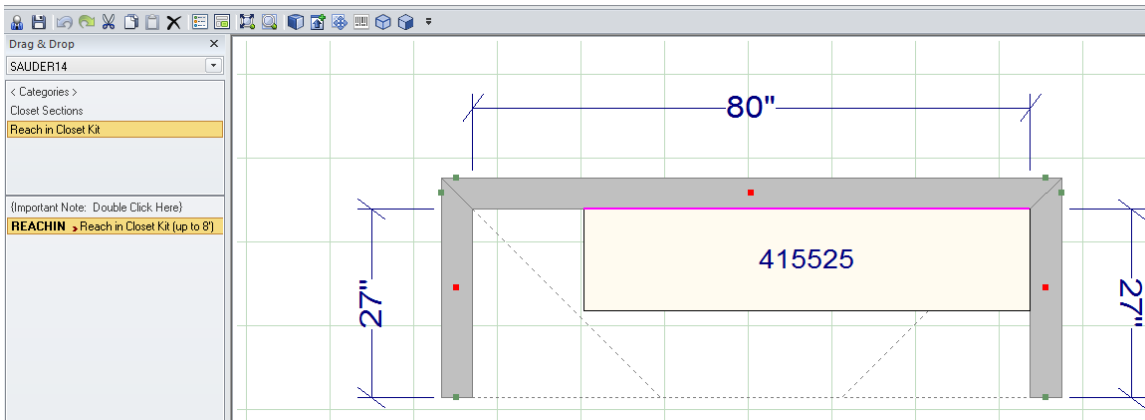
Tilting Shelves- **Attributes -> Variables** tab. Click Drop down menu under **Tilt Shelves**.

Adding Rods- **Attributes -> Variable** tab. Click on Drop down menu under **Rod Display Lower or Upper Part**.



Reach in Closet Kit

Drag and Drop the **Reach in Closet Kit** into your "Room Layout" Then resize wall to wall.



To change Shelf and Rod positions/heights go to **Attributes->Variables** and adjust shelf heights. Default is double hang on left but to change set **Left Shelf Position 2** zero and then set **Right Shelf Position 2** 39".

