

WoodTrac Closet Catalog on 2020 Design



For all questions about designing a closet please contact us at woodtrac@sauder.com

For more info on individual cabinets or items, design inspiration, install tips, etc. visit www.woodtrac.com.

Design tips

WoodTrac closets are a cabinet based system with 18", 24" and 30" wide full-length cabinets (interior dimensions) and 18", 24", 30" and 36" wide hanging half cabinets. Drag and drop cabinets into your Room Layout placement zones to get started.

Generally at least 60% of storage in a closet should be hanging space. For an average homeowner we suggest 70% double hang, 10% single hang and then split the rest on shelving and/or drawer storage.

For Hanging Storage Double Hang Half cabinets are the easiest installation. Double Hang full cabinets are the best looking option for hanging space. Using a Single Hang Shelf and Rod between cabinets or cabinets and a wall is the least expensive option. Double Hang and Single Hang Half cabinets can be cut to size.

Keep cut to size hanging space to a minimum (1 per wall max) to reduce install times.

Clients with many dresses or who hang pants full length may need more single hang space versus a typical homeowner who needs 24-30" of Single Long Hang space. Put single hang storage in corners because it is often the least accessed clothing.

Shelf cabinets with their tiltable and adjustable shelves are ideal for shoe storage or flat storage of items like sweaters. Add a pack of extra shelves to a Shelf Cabinet for clients with large shoe collections.

Door/Drawer cabinets offer some shelf storage and some drawer storage for storage of loose items like socks, and undergarments. 24" and 30" Door/Drawer Cabinets also have upper doors to hide items and add a high-end look.

Add more drawers for clients who don't have drawer storage (chests, dressers) in their bedroom.

Center Shelving/Drawer cabinets on walls for easy access. Then fill in with Double Hang storage and Single Hang Storage 12-30" wide.

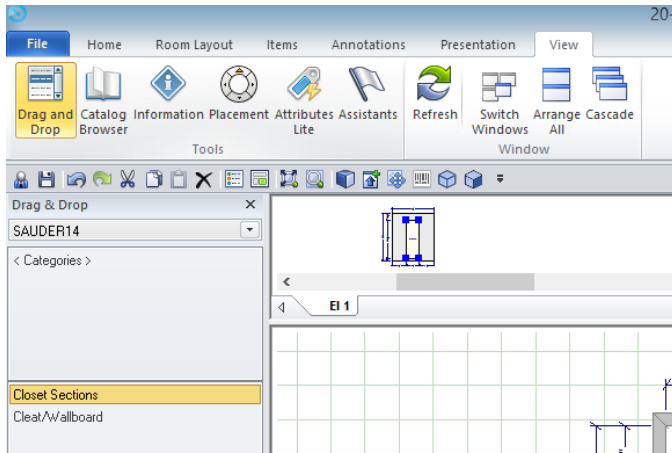
To deal with corners run cabinets on one wall into the corner or run a shelf and rod into the corner. Then on the perpendicular wall start the next cabinet or hanging space 24" from the wall corner.

Accessorize with Rev-a-shelf wire baskets, valet rods, hampers, etc. Use code 1sauder50 to get 50% off all items on www.rev-a-shelf.com.

Using the SAUDER14: WoodTrac Closets by Sauder Catalog

(20-20 version 10) version 9 very similar

Load the catalog. Click View->Drag and Drop->Sauder Woodworking Company -> SAUDER14



Closet Sections- contains Double Hang Cabinets, Shelf Cabinets, Doors/Drawers Cabinets, Single Hang Solutions, Reach in Closet Kit and Uprights.

- **Double Hang Cabinets**- Contains Double Hang Half Cabinet, Double hang full cabinet with solid back. Extra shelves and Drawers can be added if client wants drawers or shelves on bottom and hanging on top. Double Hang Half Cabinets can be cut down to narrower widths.
- **Shelf Cabinets**- Shelf Cabinets have 6 adjustable shelves one fixed middle shelf. Shelves can be tilted. Extra shelves or drawers can be added. Shelf and Hang has 3 adjustable shelves, one fixed shelf and a rod on the bottom half for hanging clothes.
- **Doors/Drawers Cabinets**- 18" comes with 1 small drawer 2 tall. 24" and 30" have drawers and glass doors. Extra drawers or shelves can be added.
- **Single Hang Solutions**- Contains Single Hang Half Cabinets which have a fixed shelf and rod under it, can be cut narrower. Also contains "Single Hang Shelf and Rod" create custom sized hanging space up to 47.25" wide. More details below. Use two to create custom sized double hang space. Use optional wallboard to finish drywall under shelf/rod.
- **Reach in Closet Kit**- Economical solution to reach in closets up to 96" wide. Contains cleats, shelves, rods and an upright to create double hang on one side and single on another split by an upright. More details below.
- **Upright**- use on walls with Single Hang Shelf and Rod to create built in look. Also can be used to end a run of Single Hang Shelf and Rod mid wall.

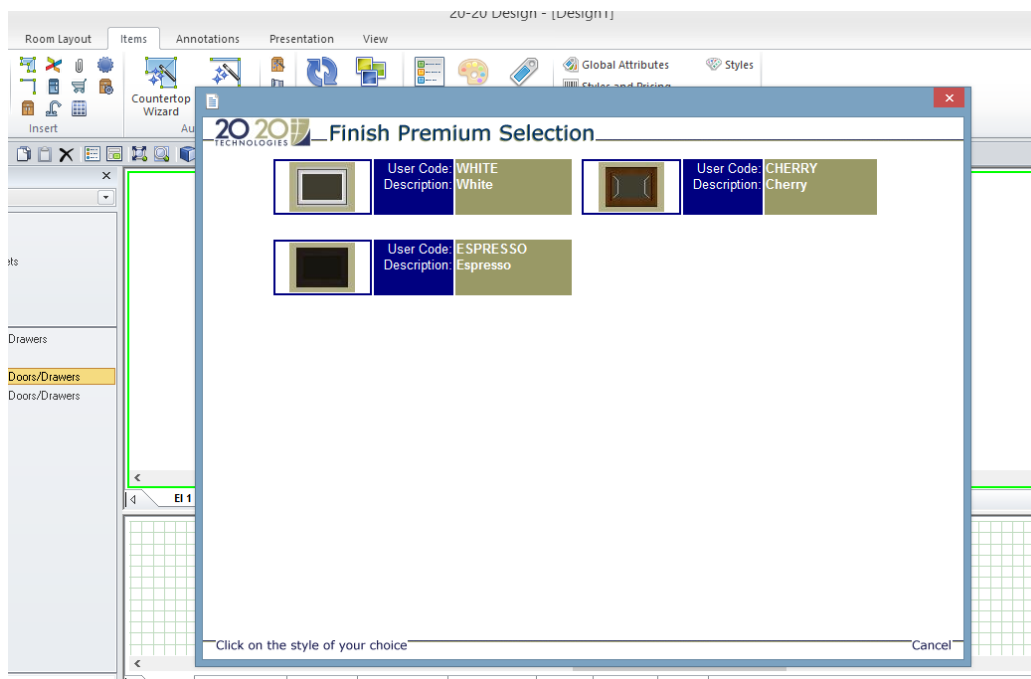
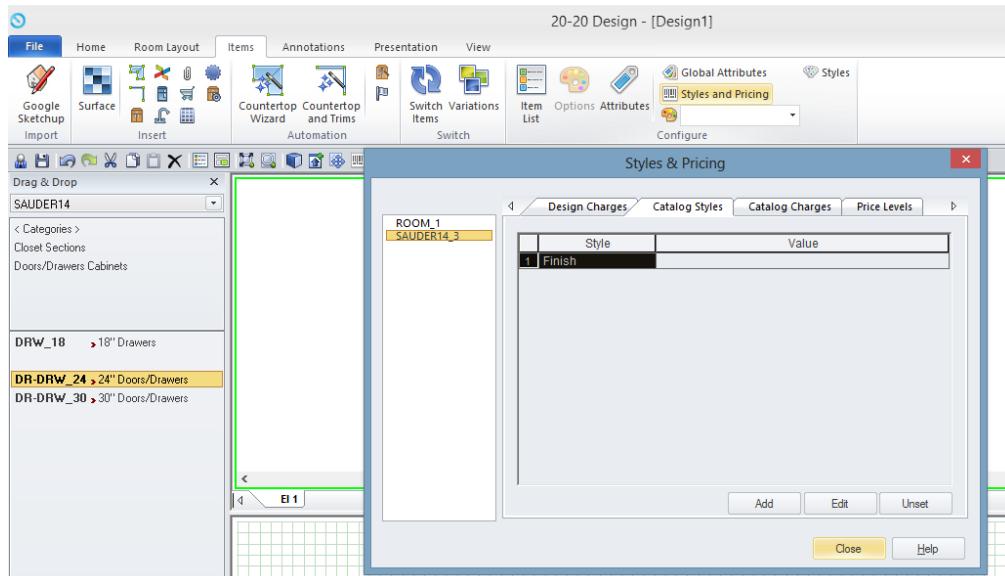
Cleats/Wallboard must be added to the manually to Item List. All designs/installs require Cleats.

- **Wall Cleats**- must be added to every design. Runs behind cabinets and under shelves. See instructions below to calculate amount of wall cleat needed.
- **Wallboard**- optional to use under Single Hang Shelf and Rod or anywhere else drywall is exposed. Sold in 4'x4' pieces, 2 to a pack.

Selecting a Finish

Click on “Styles and Pricing”. Go to “Catalog Styles”, double click on finish under Style, double click the desired finish. WoodTrac closets come in White, Cherry or Espresso with fixed drawer styles by finish.

To change a finish go back to “Catalog Styles” and “Unset” the existing finish then click “Add” and repeat the Selecting a finish first Step.



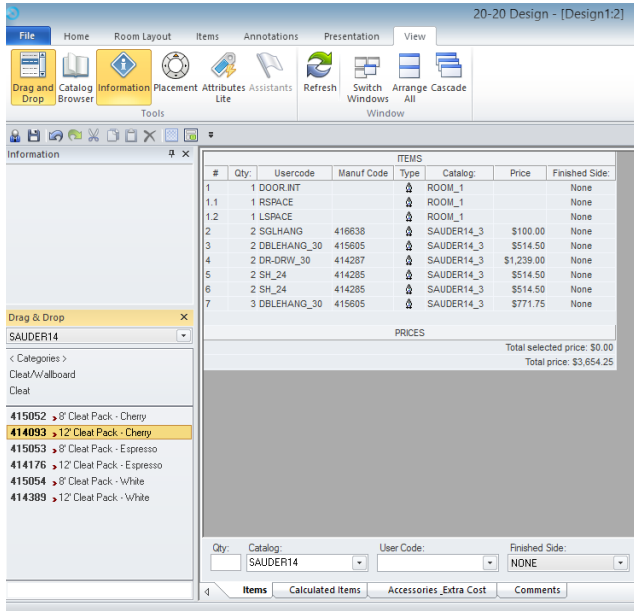
Wall Cleats

All designs must use Wall Cleat to secure units to the wall. To calculate wall cleat:

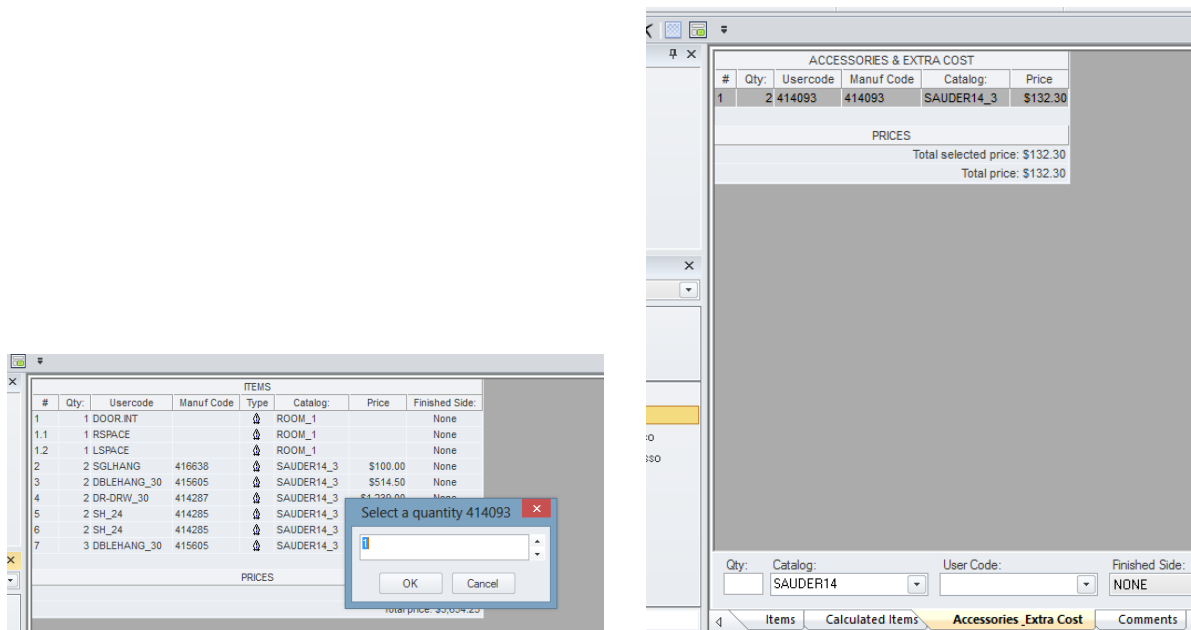
Add exterior width of cabinets (37.5" W, 31.5" W, 25.5" W, 19.5" W) and width of cut to size hanging space, which is your Single Hang Rod and Shelf. Wall cleats are 143" or 96" per cleat and 2 to a box. Account for scrap.

Note: These do not need to be added to the rendering. All units and Shelf & Rods have them automatically rendered in.

IMPORTANT: To add these to your quote go to "List View" and drag the Cleat over and drop onto the "Items" page. You must do this step.



Enter your desired quantity and the Wall Cleat quantities will now show up in the "Accessories_Extra Cost" tab in "Show Item List" view.



Create Hanging Space-

Standard sized Hanging Space:

Drag over any of the following cabinets into the placement zone:

Full Length Cabinets (full length uprights, hang or floor mount, solid backs):

Double Hang Cabinets Folder

DBLEHANG_18 > 18" Double Hang (19.5" W exterior dimensions)

DBLEHANG_24 > 24" Double Hang (25.5" W exterior dimensions)

DBLEHANG_30 > 30" Double Hang (31.5" W exterior dimensions)



Half Cabinets (half uprights, hang only, no backs):

Double Hang Cabinets Folder

DBLEHANG_18 > 18" Double Hang Half Cabinet (resizeable-no back) (19.5" W max exterior dimensions) Can be cut to smaller size.

DBLEHANG_24 > 24" Double Hang Half Cabinet (resizeable-no back) (25.5" W max exterior dimensions) Can be cut to smaller size.

DBLEHANG_30 > 30" Double Hang Half Cabinet (resizeable-no back) (31.5" W max exterior dimensions) Can be cut to smaller size.

DBLEHANG_36 > 36" Double Hang Half Cabinet (resizeable-no back) (37.5" W max exterior dimensions) Can be cut to smaller size.

Single Hang Solutions Folder

SHUS_18 > 18" Single Hang Half Cabinet (no back)" (19.5 W max exterior dimensions) Can be cut to smaller size

SHUS_24 > 24" Single Hang Half Cabinet (no back)" (25.5 W max exterior dimensions) Can be cut to smaller size

SHUS_30 > 30" Single Hang Half Cabinet (no back)" (31.5 W max exterior dimensions) Can be cut to smaller size

SHUS_36 > 36" Single Hang Half Cabinet (no back)" (37.5 W max exterior dimensions) Can be cut to smaller size

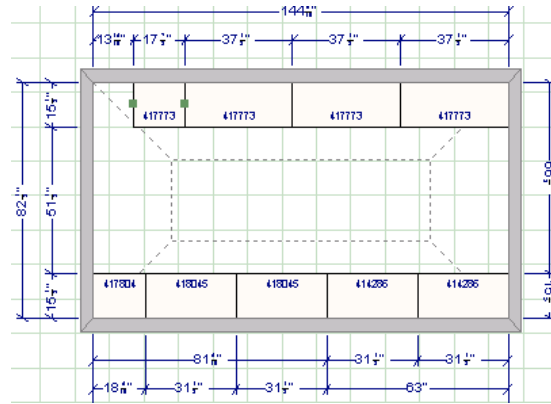
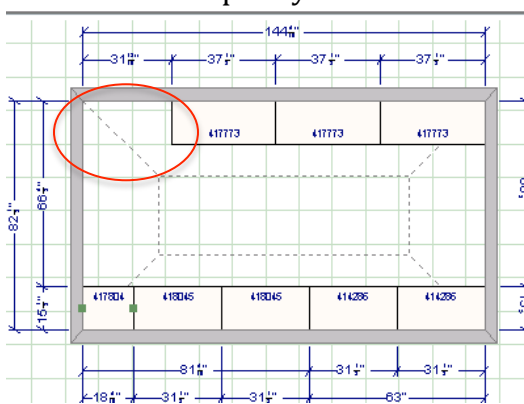


Custom sized Hanging Space: Single Hang Half Cabinet

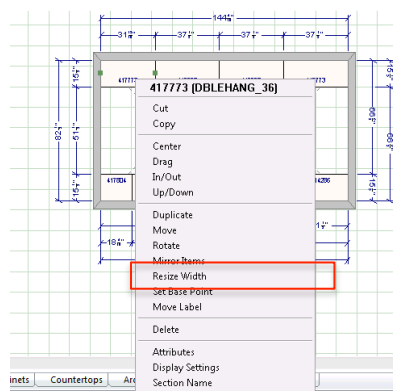
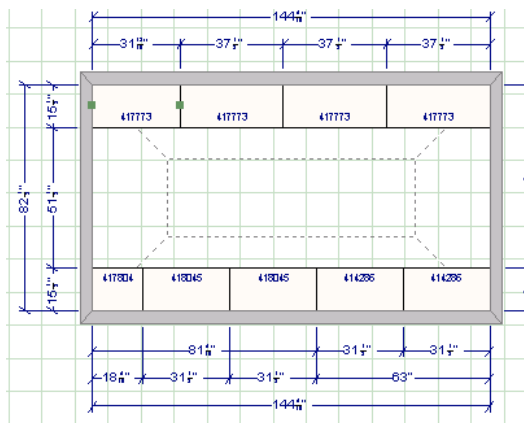


To create custom sized single hanging space anywhere use a Single Hang Half Cabinet. This item can be cut to size and so it's width can be resized in 20-20.

To begin drag the "SHUS_30 > 30" Single Hang Half Cabinet (no back)" from "Single Hang Solutions" folder into the space you would like to fill. Max 31.5" W



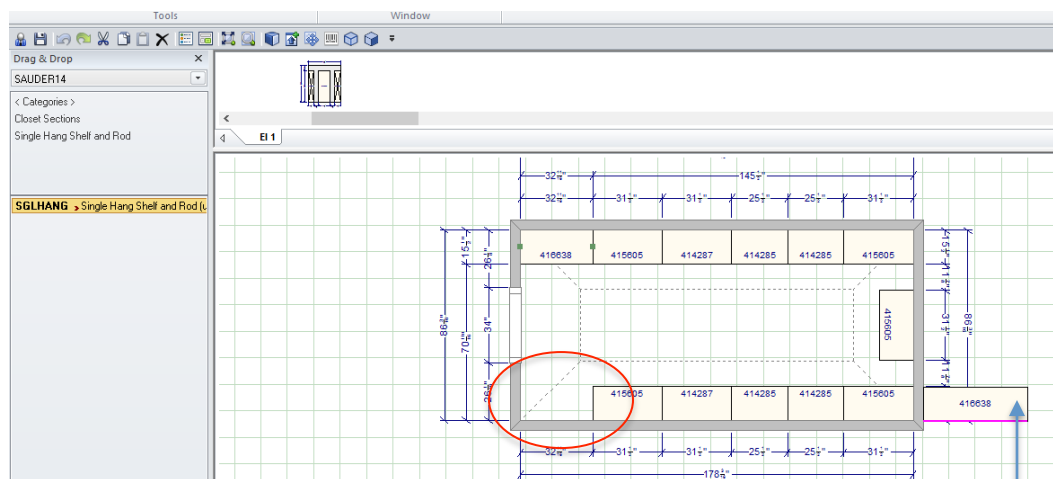
Click the **green dots** and drag the width to fill your space or Right Click the cabinet, select "Resize Width" and then drag to proper size or type in your desired width.



Custom sized Hanging Space: Single Hang Shelf and Rod

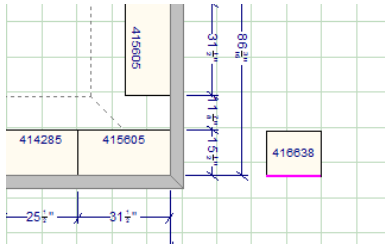


To create custom sized hanging space between cabinets or between a cabinet and a wall use a "Single Hang Shelf and Rod" found in the catalog category "Closet Sections". This must be used between 2 cabinets or between a cabinet and a wall.

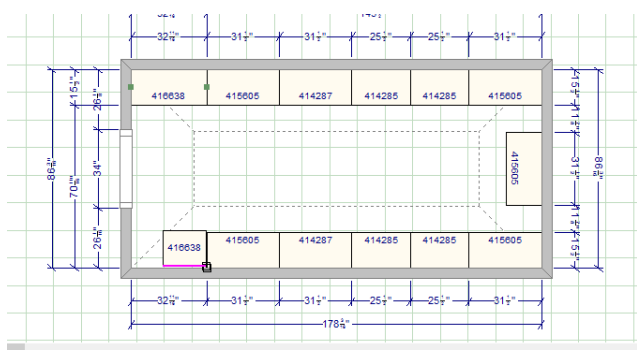


Click **Closet Sections->Single Hang Shelf and Rod** then drag and drop into the space (circled in red) and resize to fit the space.

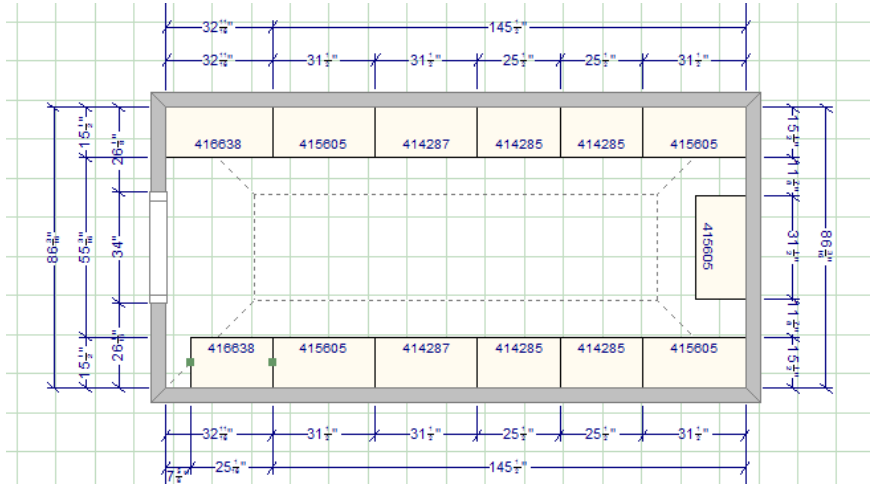
If the space is less than 48" the Shelf/Rod shape will appear on the right or left side of the wall. Resize it and then move it to the correct space. Then resize it again to fit the correct space.



Resized Shelf & Rod



Resized Shelf and Rod moved to correct space



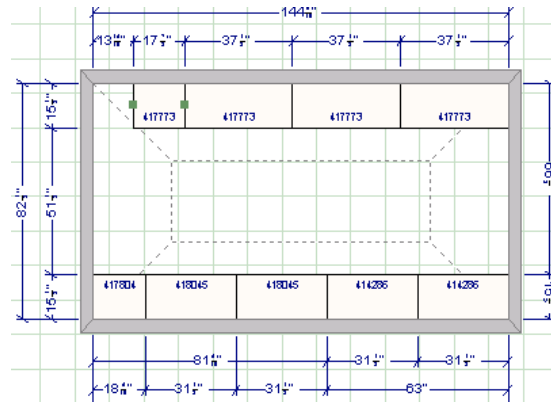
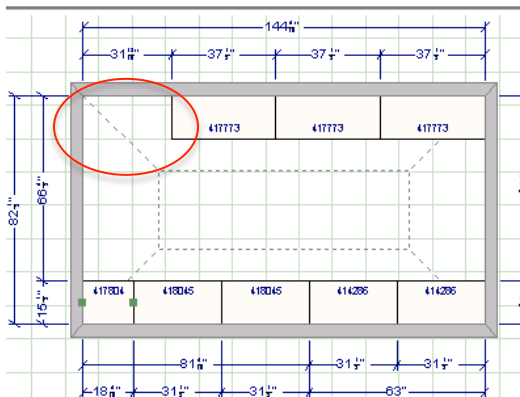
Resize Shelf and Rod to fit blank correct space

Custom sized Hanging Space- Double Hang and Rod

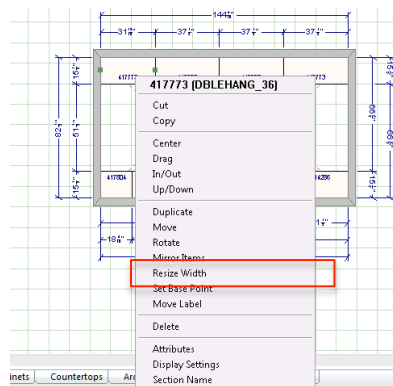
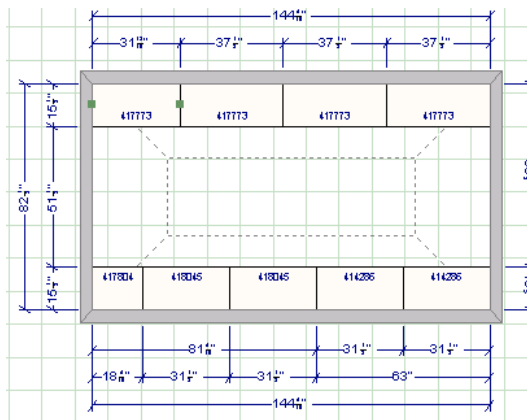


To create custom sized hanging space anywhere use a 36" Double Hang Half Cabinet. This item can be cut to size and so it's width can be resized in 20-20.

To begin drag the "DBLEHANG_36 > 36" Double Hang Half Cabinet (resizeable- no back)" over from "Double Hang Cabinets" into the space you would like to fill.



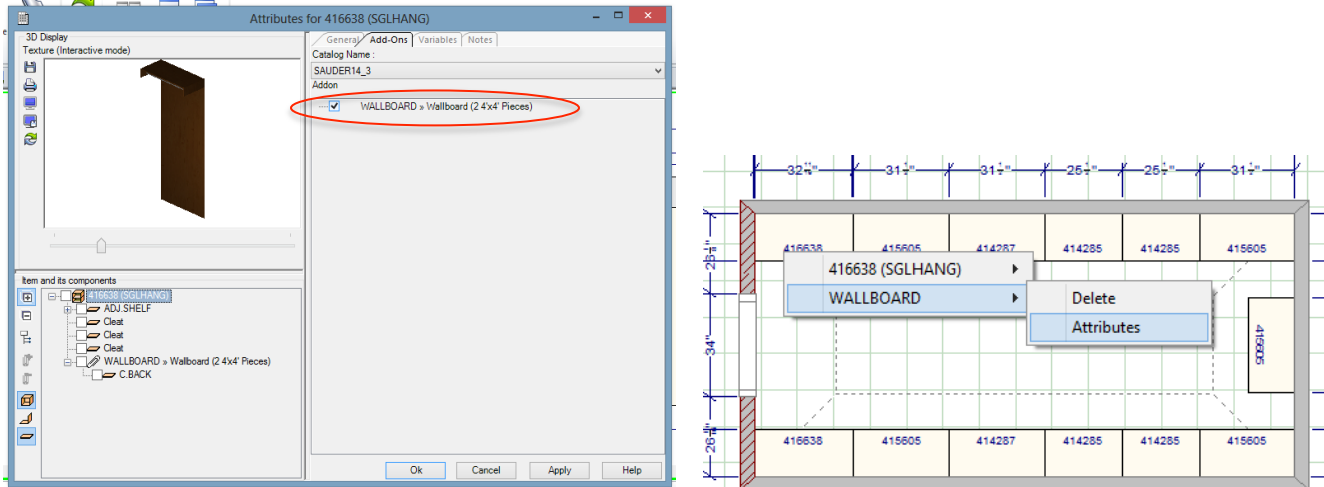
Click the **green dots** and drag the width to fill your space or Right Click the cabinet, select **Resize Width** and then drag to proper size or type in your desired width.



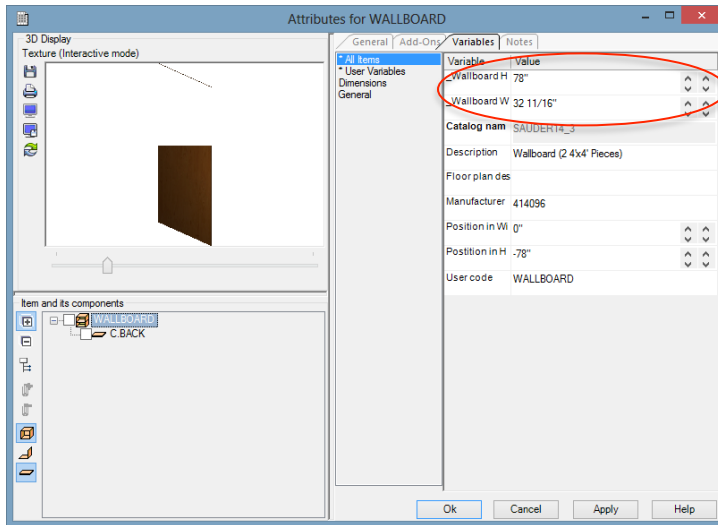
Wallboard

Wallboard, which is used to finish drywall behind hanging space, is the same materials as the cabinet backs, and must be added manually to the “Item List”. It comes packed in 2 4'x4' sheets. Even though you can render it you must still add it to the “Item List” manually.

To render Wall Board under a Shelf and Rod, Right click the “Single Hang Shelf and Rod” shape then going to **Attributes-> Add-Ons** tab and check the **WALLBOARD** box.



To resize Wallboard, Right click the Single Hang Shelf and Rod then going to Wallboard-> Attributes-> Variables tab and changing the _WallboardH or _WallboardW.

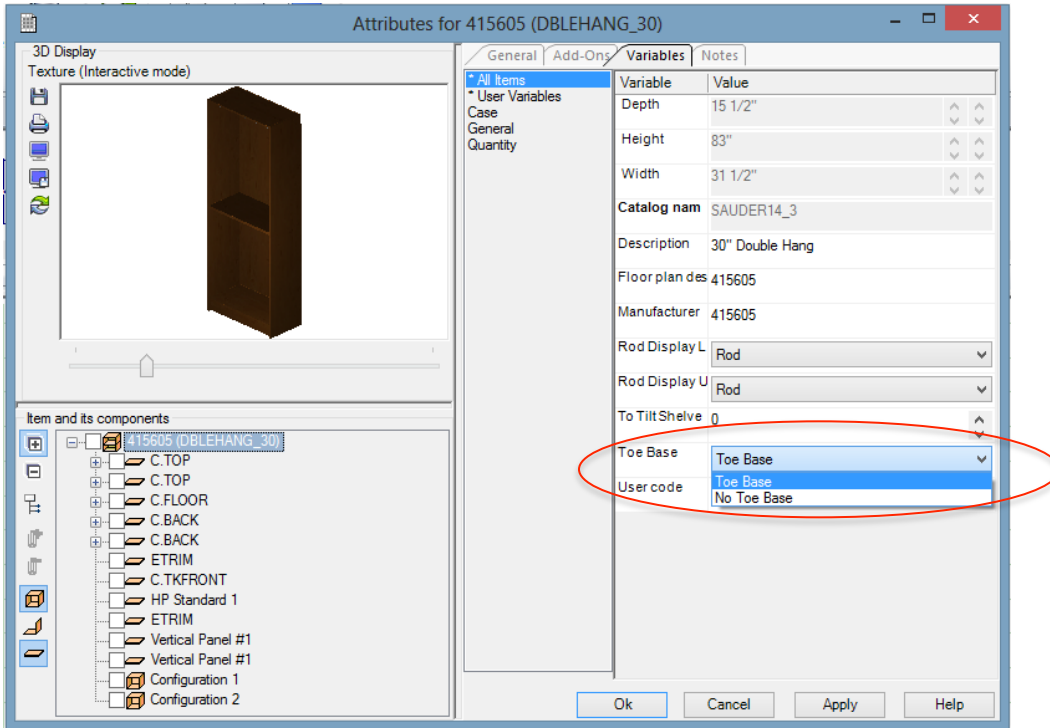


Even though they render you must add them to the “Item List”.

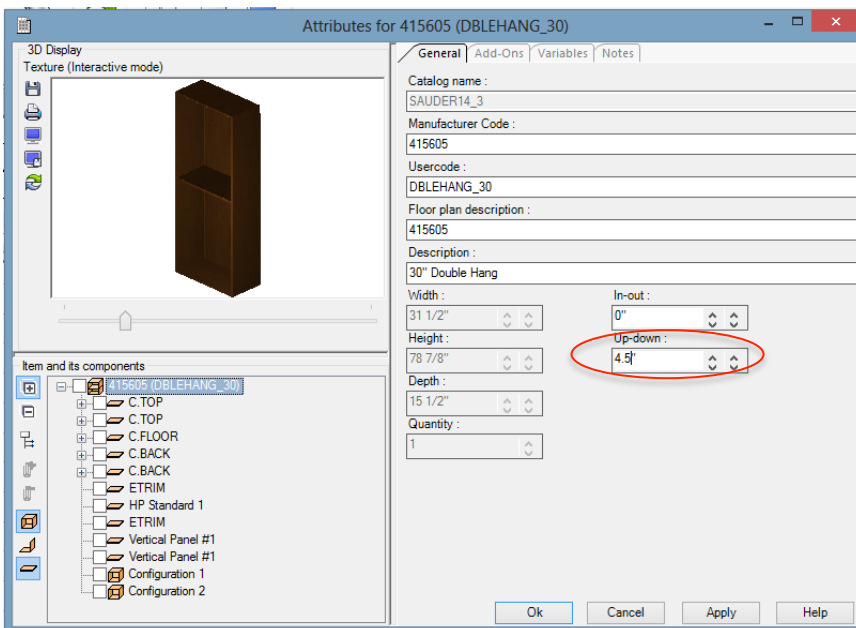
To add these to your quote go to “List View” then drag the “Wallboard” over and drop onto the “Items” page. Enter your desired quantity and the Wallboard quantities will now show up in the “Accessories Extra Cost” tab. See instructions above on Wall Cleats for more details on manually adding items to “Item List.”

Hanging cabinets vs Floor Mounted

Cabinets default as floor mount. To change them to wall mounted go to **Attributes->Variables** tab click on Drop down menu next to **_Toe Base** to change to **No Toe Base**.



Next also in **Attributes-> General** tab change **Up-down:** to how many inches off the floor you would like the cabinet to be. Suggested height is 4.5" but depending on baseboards, ceiling height, etc. you can go higher or lower.

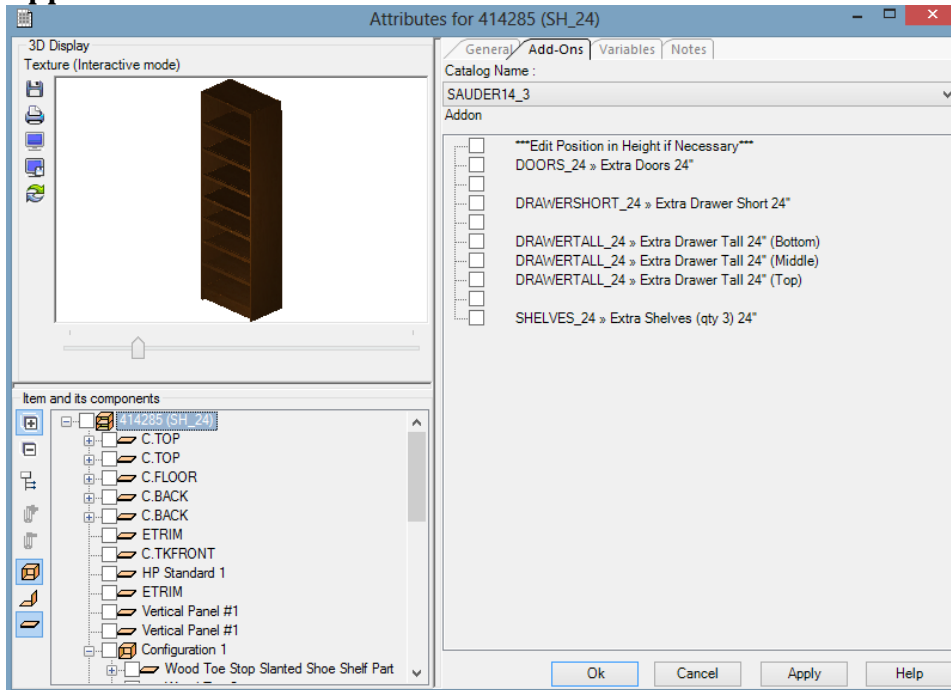


Customizing cabinets

To add extra Drawers, Shelves, or Doors to a cabinet click on **Attributes-> Add-Ons** tab and click in the check box of the desired extra.

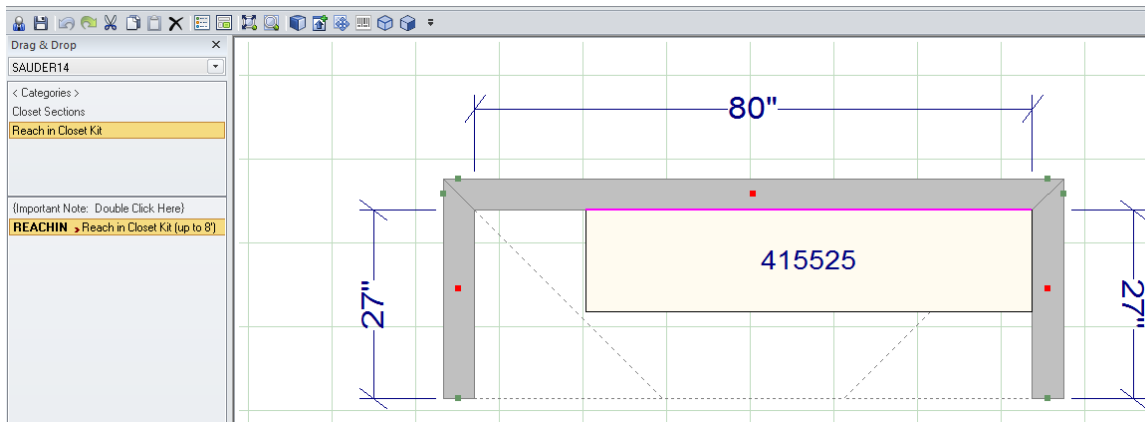
Tilting Shelves- **Attributes -> Variables** tab. Click Drop down menu under **Tilt Shelves**.

Adding Rods- **Attributes -> Variable** tab. Click on Drop down menu under **Rod Display Lower or Upper Part**.



Reach in Closet Kit

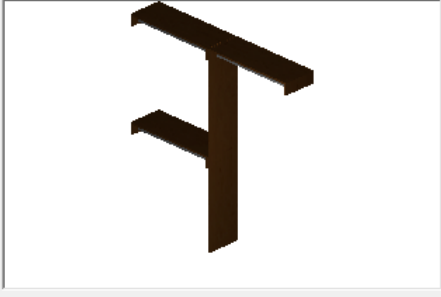
Drag and Drop the **Reach in Closet Kit** into your “Room Layout” then resize wall to wall.



To change Shelf and Rod positions/heights go to **Attributes->Variables** and adjust shelf heights. Default is double hang on left but to change set **Left Shelf Position 2** zero and then set **Right Shelf Position 2** 39”.

Attributes for 415525 (REACHIN)

3D Display
Texture (Interactive mode)



Item and its components

- 415525 (REACHIN)
 - ADJ.SHELF
 - Cleat
 - Cleat
 - Cleat
 - ADJ.SHELF
 - Cleat
 - Cleat
 - Cleat
 - ADJ.SHELF
 - Cleat
 - Cleat
 - Cleat
 - DIV

General Add-Ons Variables Notes

Variable	Value
Depth	14 1/2"
Height	83"
Width	80"
_Left Shelf Po	39"
_Left Shelf Po	83"
_Right Shelf P	83"
_Right Shelf P 0"	0"
_Upright Posit	40"

Catalog name SAUDER14_3

Description Reach in Closet Kit (up to 8)

Floor plan des 415525

Manufacturer 415525

Toe Base 4 1/2"

User code REACHIN

Ok Cancel Apply Help